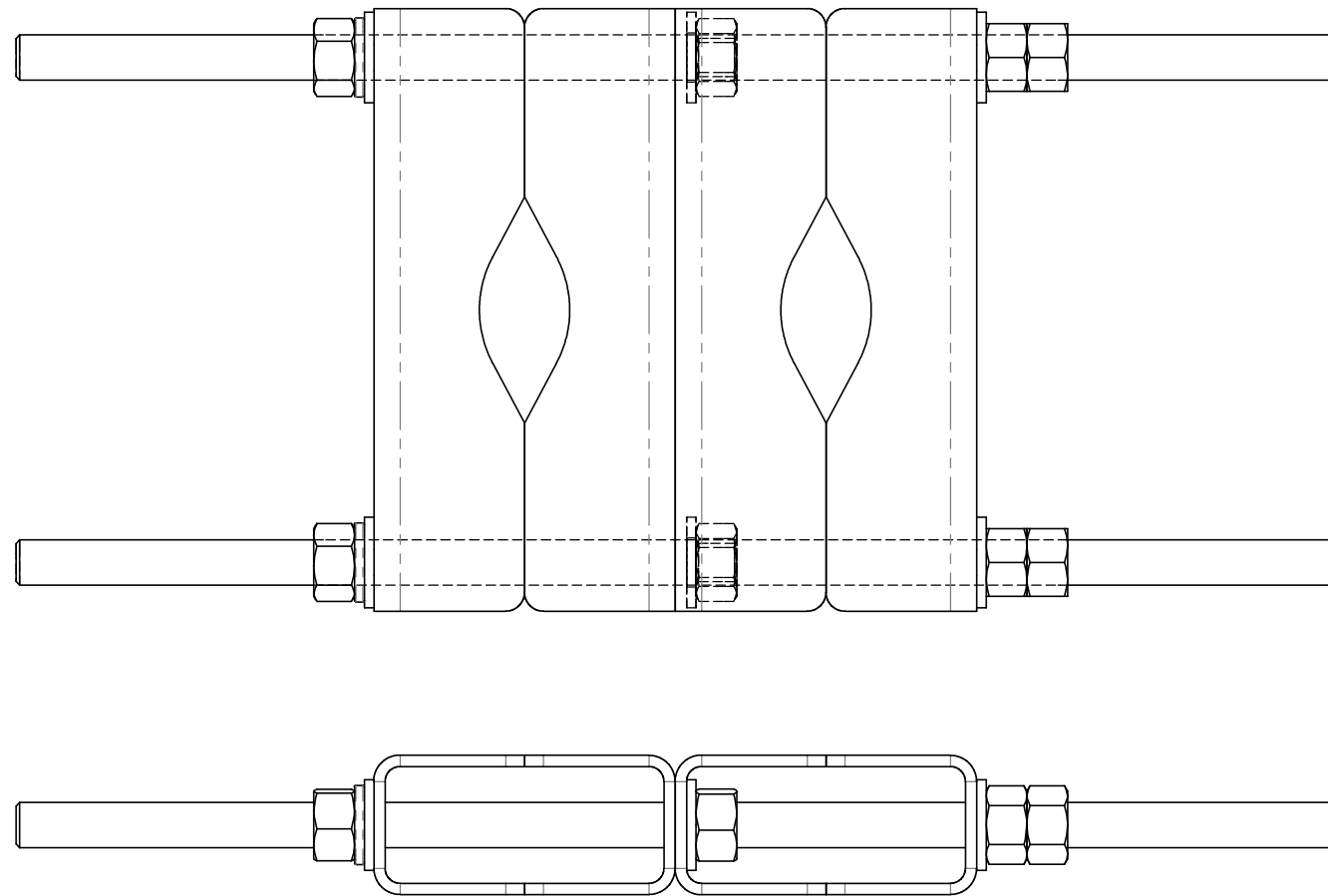


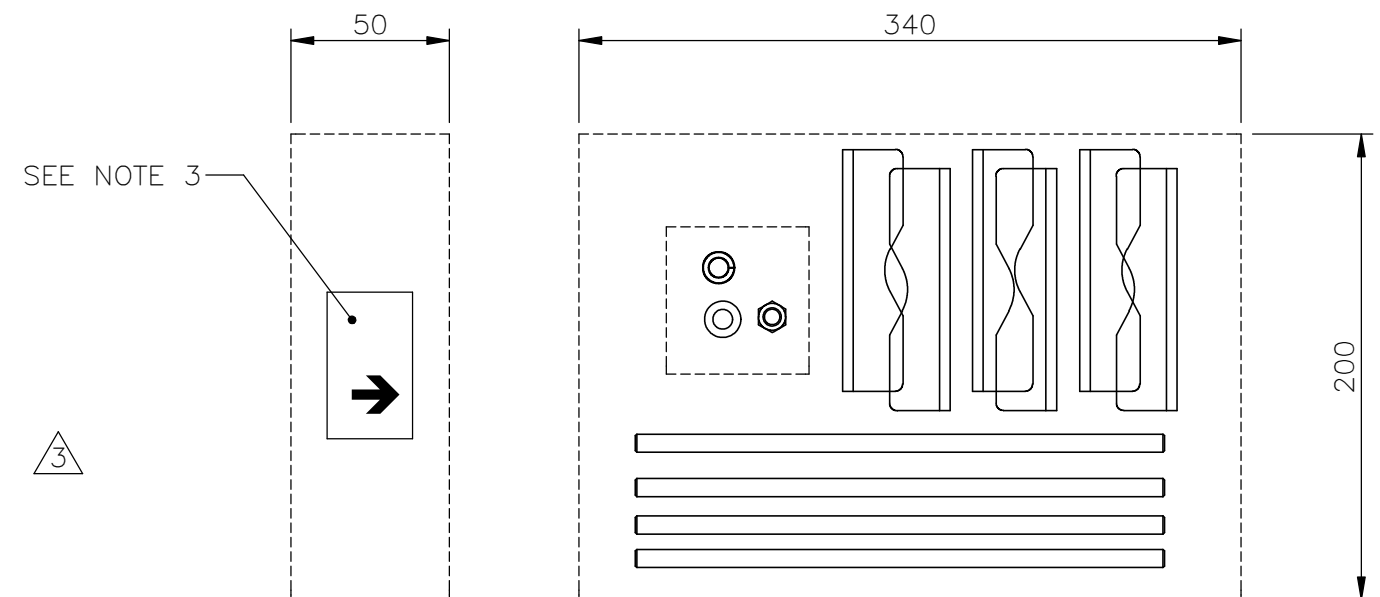
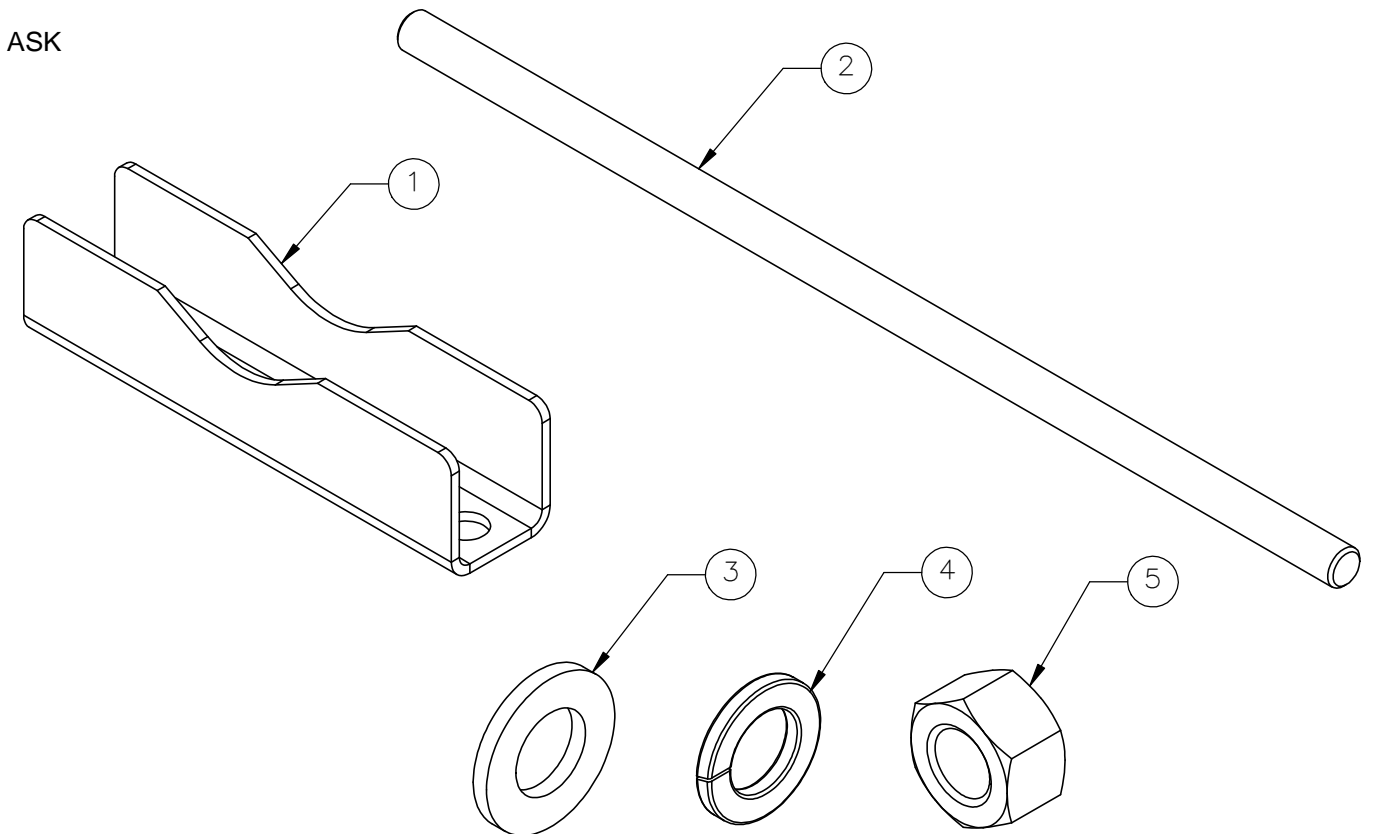
IF IN DOUBT, ASK




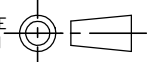
ITEM	PART NO.	DESCRIPTION	DRG NO.	QTY
1	32416	CLAMP GALVANISED	32416	8
2	45963-2	M12 x 350MM STUDDING STAINLESS STEEL A2	—	4
3	7708	M12 PLAIN WASHER STAINLESS STEEL A2	—	12
4	24210	M12 SPRING WASHER STAINLESS STEEL A2	—	4
5	7709	M12 FULL NUT STAINLESS STEEL A2	—	16

1. CLAMPS & STUDDING TO BE PLACED INTO CARTON AS SHOWN.
2. NUTS, SPRING & WASHERS TO BE PLACED IN SEALED TRANSPARENT BAG.
3. CARTON TO BE LABELED TO SHOW:

GALVANISED PARALLEL BRACKET 38-120mm (PAIR)
P/N 2141.01.00.00
ISSUE 3
WEIGHT: kg



3	17-060	M12 FULL NUT QUANTITY WAS 12	20/06/2017	LAS
2	-	ADDED FIXINGS AND MODIFIED NOTES	02/04/13	DM
ISSUE	CHANGE NOTE NO	DESCRIPTION	DATE	APP'D

MATERIAL: SEE BOM					
FINISH: SEE NOTES					
DO NOT SCALE DRAWING		DEBURR AND BREAK SHARP EDGES			
SCALE: NTS					
		UNLESS OTHERWISE SPECIFIED DIMENSIONS ARE IN MILLIMETERS			
		FIRST USED ON: MOUNTING			
<div>TOLERANCES: UNLESS OTHERWISE STATED</div> <div>0 ±0.5 0.0 ±0.25 0.00 ±0.1 0.000 ±0.05</div> <div>ANGULAR: ±0.5</div>		NAME		DATE	
		DRAWN		CS 16/06/2017	
		CHECKED		LAS 20/06/2017	
A3 SHEET 1 OF 1		PART No: 2141.01.00.00		DWG NO. 2141.9000	
				3 ISSUE:	